

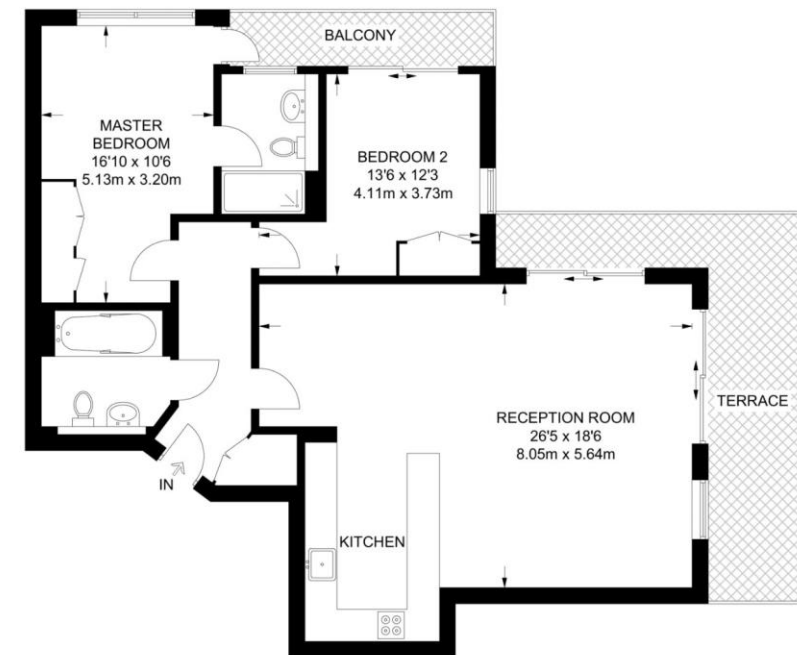
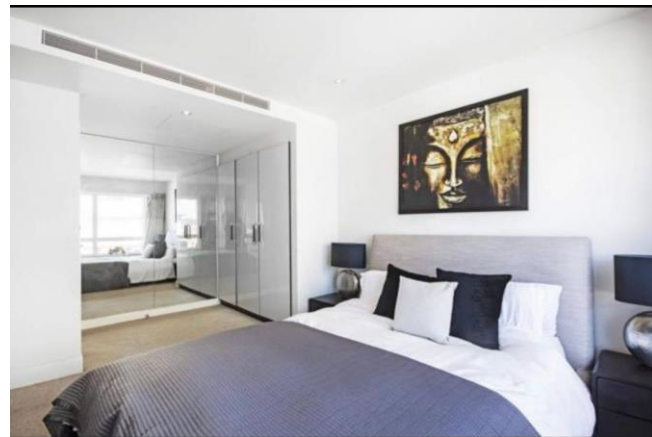


Description

Leasehold This stunning 7th floor 2-bedroom apartment boasts a sizeable L-shaped roof terrace, stylish interiors with the St George Premier Upgrade Pack, a residents' swimming pool, gym and an on-site concierge. This property offers a great location close to a range of local shops and amenities including pubs, restaurants and a Tesco Express.

Communal swimming pool, gym, sauna and steam room are on-site, Outstanding apartment on the 7th floor, Spacious L-shaped roof terrace and 2nd balcony, steam room and concierge Stylish interiors benefitting from the Premier Upgrade Pack, Open-plan kitchen with granite worktops and breakfast bar, Allocated, secure, gated underground car parking, Integrated air conditioning .

APPROXIMATE FLOOR AREA = 1024 SQ FT / 95.1 SQ M
INCLUDING LIMITED USE AREA (4 SQ FT / 0.4 SQ M)



SEVENTH FLOOR

Further details
Tenure: Leasehold.