



Sheldon Square
Paddington,
London W2

WER INVESTMENTS

Residential & Commercial Investment

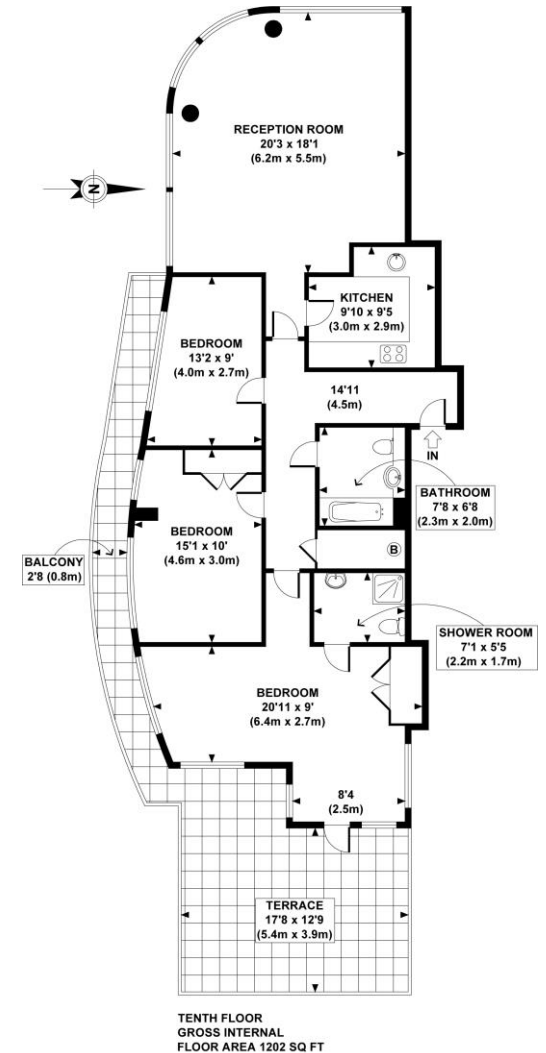
siham@werinvestments.com
www.werinvestments.com
M: 07985475966

SHELDON SQUARE, PADDINGTON LONDON

ASKING PRICE: £ 2,000,000

Description

We are pleased to offer a marvellously stunning three bedroom apartment on this modern secure block. The apartment benefits a spacious bright reception room with ceiling to floor windows with a stunning view, a master bedroom with ensuite shower room, walk in wardrobe and access to a stunning roof terrace with exquisite views across London. The property also has two further bedrooms, modern bathroom and fully fitted modern kitchen. It requires works. Located within Sheldon Square where there are shops bars and restaurants and also a local supermarket. Stone throw away from Paddington Station with underground and National Rail links.



TENTH FLOOR
GROSS INTERNAL
FLOOR AREA 1202 SQ FT

APPROX. GROSS INTERNAL FLOOR AREA 1202 SQ FT / 112 SQ M
M.I.W.E.R. - 030210 Copyright pho.to.plan.co.uk
Floorplans are for identification and guideline purposes only, not to scale.
Compliant with RICS code of measuring practice.

Further details
Local authority: The City of Westminster

WER INVESTMENTS

Residential & Commercial Investment

siham@werinvestments.com

www.werinvestments.com

M: 07985475966