

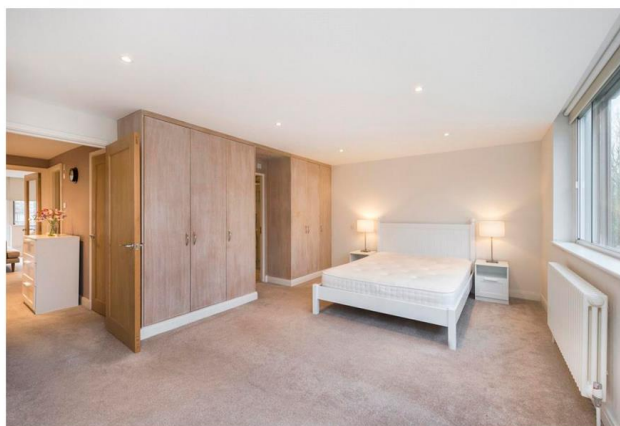
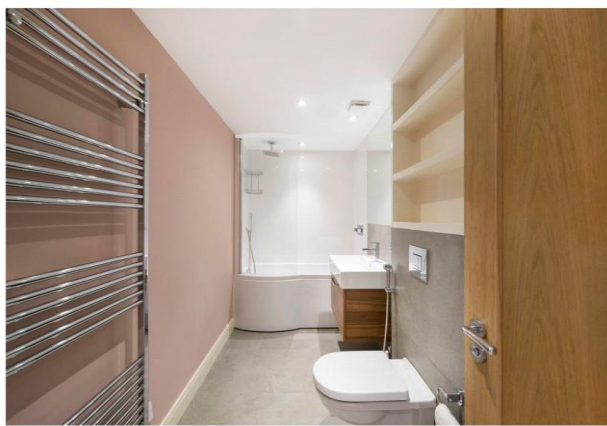
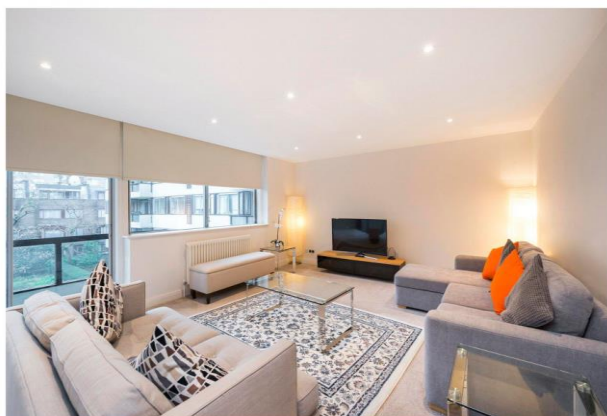


QUADRANGLE TOWER, CAMBRIDGE SQUARE, LONDON

ASKING PRICE: £ 1,300,000

Description

This very spacious two double bedroom which was originally a three-bedroom apartment comprises of a large reception/dining area with separate kitchen, two double bedrooms with fitted in wardrobes, two tiled bathrooms (one of which en-suite), and a generous private balcony that overlooks the communal gardens. This very well looked after property is finished high standard and benefits from an abundance of light and space. It also benefits from 24-hour concierge and security. The property is located moments from Hyde Park, Marble Arch Station (Central Line) and Paddington Station (Bakerloo Line, Circle Line, District Line and Hammersmith & City Line).



Second Floor
Approx Gross Internal Area 1208 Sq Ft - 112.22 Sq M

For Illustration Purposes Only - Not To Scale
www.goldilens.co.uk
Ref. No. 014738E

Further details

Tenure: approx. 160 years remaining with Share of Freehold / Local authority: The City of Westminster

WER INVESTMENTS

Residential & Commercial Investment

siham@werinvestments.com

www.werinvestments.com

M: 07985475966