



Praed Street
SW2
London

WER INVESTMENTS

Residential & Commercial Investment

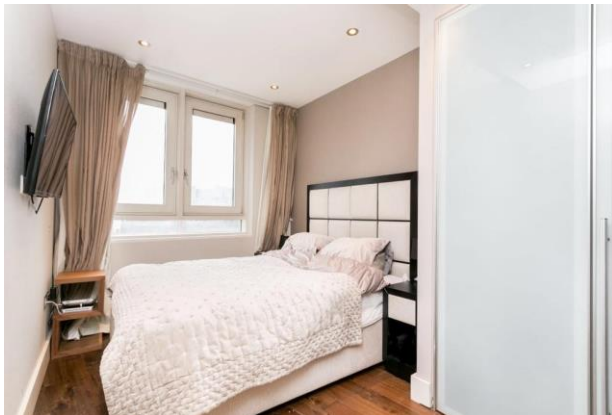
siham@werinvestments.com
www.werinvestments.com
M: 07985475966

BALMORAL APARTMENT, PRAED STREET LONDON

ASKING PRICE: £ 575,000

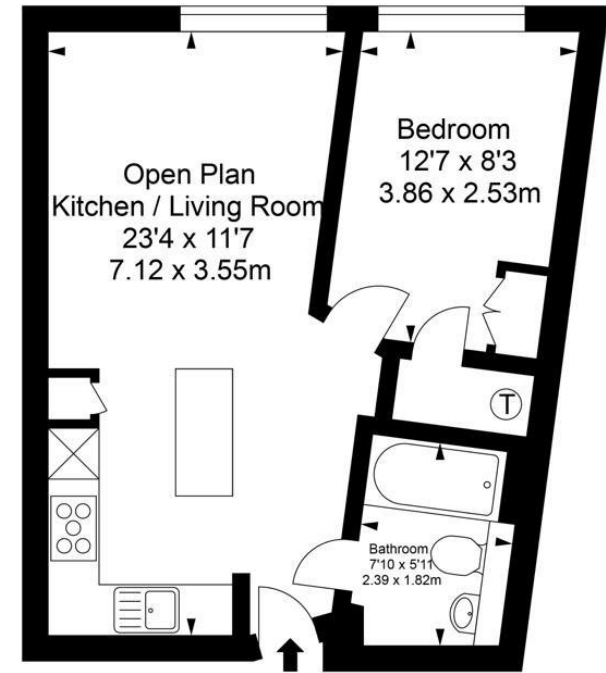
Description

This modern wonderfully presented one bedroom apartment, has an exceptional luxury sleek designed full kitchen. Balmoral Apartments sits alongside the Paddington Basin, a stunning basin with lots of amenities and events. Open Plan Kitchen, Reception, Bedroom, Bathroom, Concierge, Air Cooling, Elevator.



Balmoral Apartment, SW2

Approximate Gross Internal Area :-
Fifth Floor :- 41.14 sq m / 442 sq ft



Fifth Floor

Illustration for identification purposes only, measurements are approximate, not to scale.
floor plan by: www.creativeplanettk.com

Further details
Tenure: approx. 160 years remaining with Share of Freehold / Local authority: The City of Westminster

WER INVESTMENTS

Residential & Commercial Investment

siham@werinvestments.com
www.werinvestments.com
M: 07985475966