



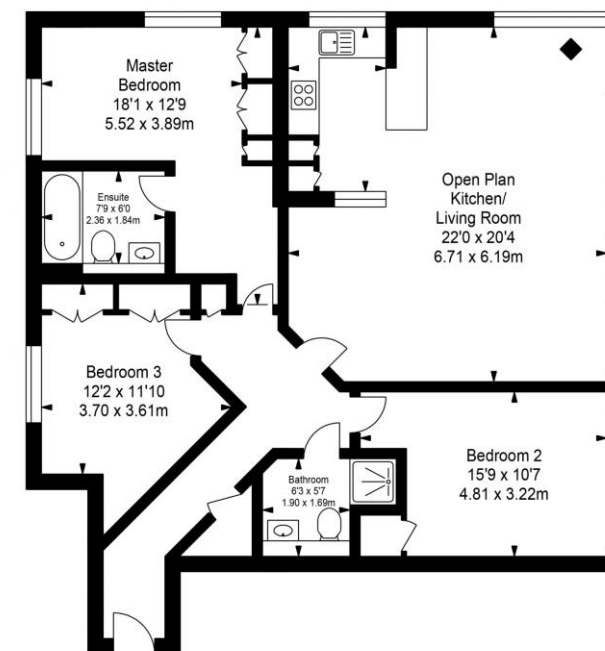
Description

Well, presented three bedroom apartment located on the first floor within this popular waterside development. Features include a fully fitted kitchen, spacious reception room, generous storage and a modern bathroom. In addition the apartment benefits from comfort cooling and a 24-hour porter. Peninsula Apartments form part of the popular West End Quay development, known for high quality workmanship and good management. Paddington Basin is a high profile area of development within Zone 1



Peninsula Apartments W2

Approximate Gross Internal Area :-
First Floor :- 113.30 sq m / 1220 sq ft



First Floor

Illustration for identification purposes only, measurements are approximate, not to scale.
floor plan by: www.creativeplanettk.com

Further details

Tenure: approx. 160 years remaining with Share of Freehold / Local authority: The City of Westminster

WER INVESTMENTS

Residential & Commercial Investment

siham@werinvestments.com

www.werinvestments.com

M: 07985475966