



Clapham Common
SW11
London

WER INVESTMENTS

Residential & Commercial Investment

siham@werinvestments.com
www.werinvestments.com
M: 07985475966

CLAPHAM COMMON, NORTH SIDE LONDON

ASKING PRICE: £ 1,750,000

Description

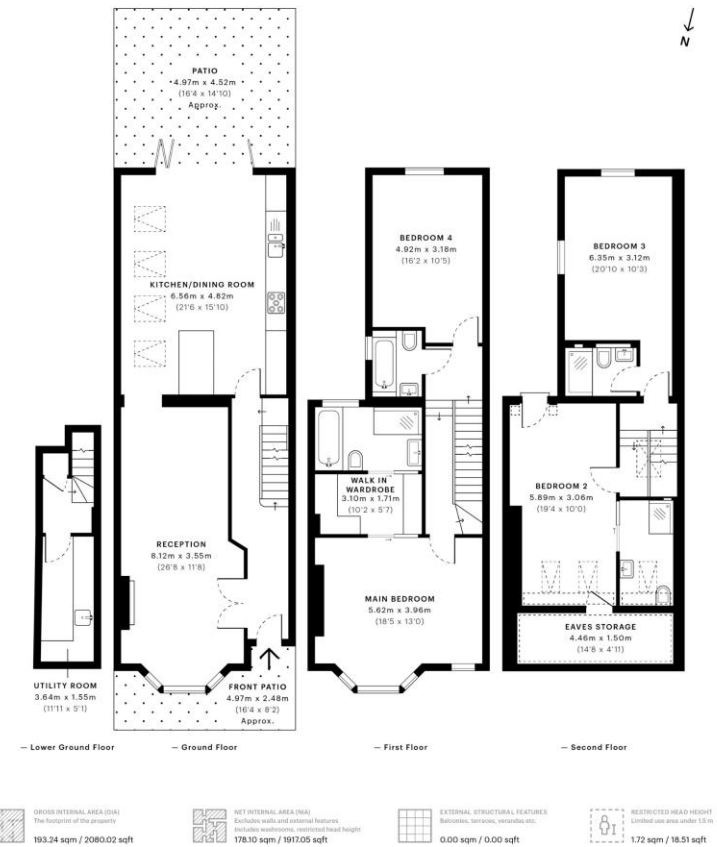
A high standard refurbishment of a Victorian Mid Terrace set over three floors. Delightful eat-in kitchen with high spec finish and ambiance spotlights. A warming well presented reception with fireplace and full bay windows. An idealistic minimal maintenance private patio. Nansen Road offers an ideal location close to both Northcote Road and Clapham Old Town, famous for their vibrant and bustling restaurants, bars and shops. It is equidistant to Clapham Common Underground Station and Clapham Junction. Refurbished Victorian mid terrace house set over 3 floors, Superb eat-in kitchen with high spec finish and skylights, Brilliant reception with fireplace and bay window, Low maintenance private patio, Chic lower ground floor utility room, Main bed with walk-in wardrobe and ensuite bathroom, 4 Excellent double bedrooms, 3 Luxe ensuite showerrooms and bathroom.



WER INVESTMENTS

Nansen Road, SW11

GROSS INTERNAL AREA
193.24 sqm / 2080.02 sqft



Further details

Tenure: approx. 160 years remaining with Share of Freehold / Local authority: The City of Westminster

WER INVESTMENTS
Residential & Commercial Investment

siham@werinvestments.com
www.werinvestments.com
M: 07985475966