



Overstrand Mansions
SW11
London

WER INVESTMENTS

Residential & Commercial Investment

siham@werinvestments.com
www.werinvestments.com
M: 07985475966

OVERSTRAND MANSION, LONDON

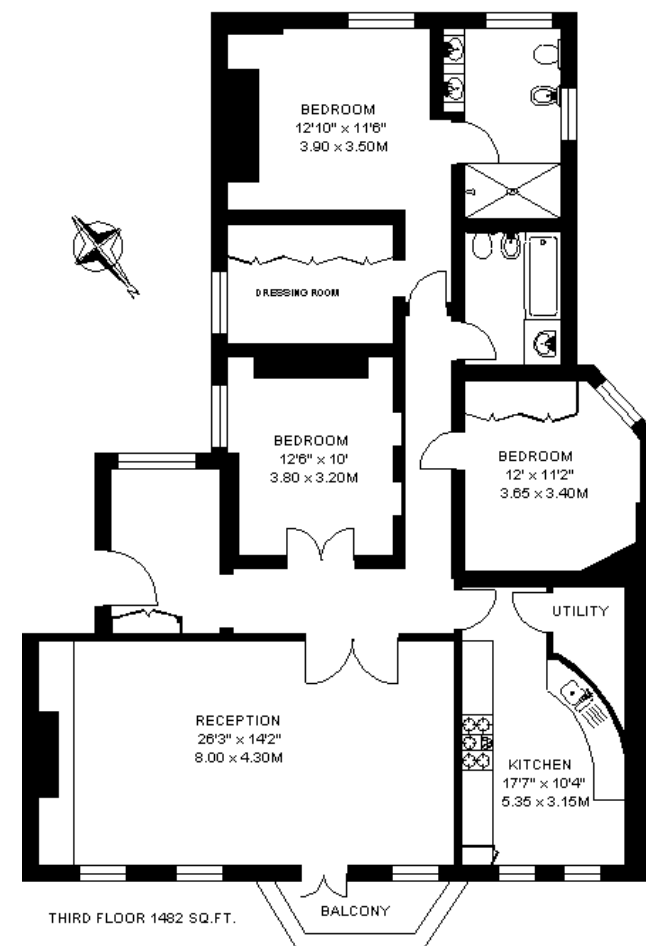
ASKING PRICE: £ 1,700,000

Description

Situated on the third floor of this imposing mansion block with sweeping views over Battersea Park from the double reception room and balcony. This property is extremely well presented and has a wonderful lay out with the kitchen overlooking Battersea Park. In addition, to the rear, there is a very well proportioned Southerly facing principal bedroom and ensuite bathroom.

Overstrand Mansions is situated approximately mid-way along Prince of Wales Drive south of Battersea Park. Travel opportunities can be found at Battersea Park and Queenstown Road mainline train stations where services run to Victoria and Waterloo respectively. The 137 bus on Queenstown Road provides access north of the river to Sloane Square, Knightsbridge and Oxford Circus and the 344 route on Battersea Park Road goes to the City via Vauxhall Cross.

APPROXIMATE INTERNAL FLOOR AREA
1482 SQ.FT / 137.6 SQ.M.



Further details
Tenure: approx. 160 years remaining with Share of Freehold / Local authority: The City of Westminster

WER INVESTMENTS

Residential & Commercial Investment

siham@werinvestments.com
www.werinvestments.com
M: 07985475966