



Macready House  
Marylebone W1  
London

**WER INVESTMENTS**

Residential & Commercial Investment

siham@werinvestments.com  
www.werinvestments.com  
M: 07985475966

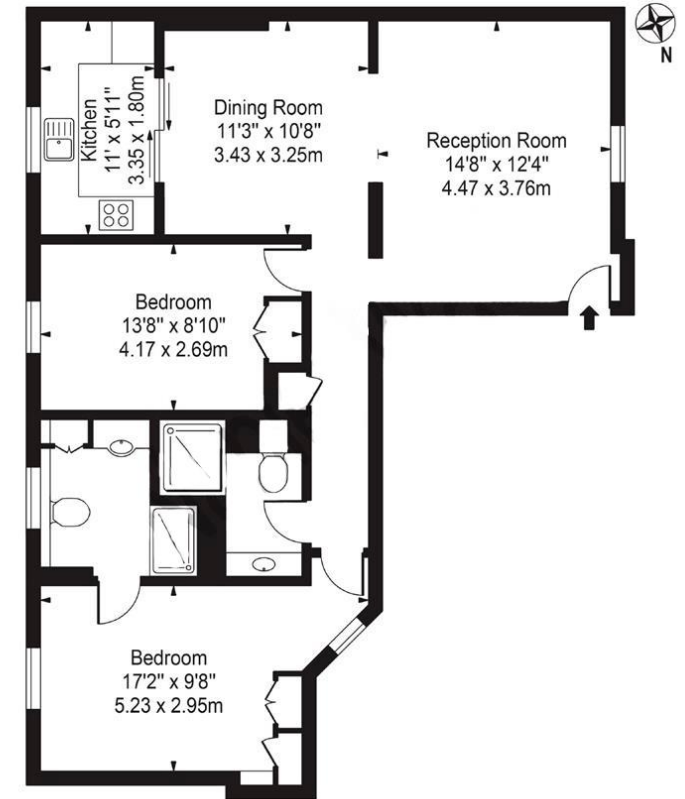
Description

A beautifully presented, fully refurbished two bedroom, two bathroom apartment set on the fifth floor of a sought after purpose built block with 24 hour portorage, lifts, communal gardens.

The accommodation is well proportioned at 852 sqft / 79sqm and is arranged with living room open to dining room, well fitted kitchen, two bedrooms, two bathrooms (one ensuite). EPC : D



Macready House  
Approx. Gross Internal Area 852 Sq Ft - 79.15 Sq M



This floor plan should be used as a general outline for guidance only and does not constitute in whole or in part an offer or contract. Any intending purchaser or lessee should satisfy themselves by inspection, searches, enquiries and full survey as to the correctness of each statement. Any areas, measurements or distances quoted are approximate and should not be used to value a property or be the basis of any sale or let.

Further details  
Tenure: approx. 160 years remaining with Share of Freehold / Local authority: The City of Westminster