



WILTON CRESCENT

Asking Price £19,000,000



siham@werinvestments.com



02037007177



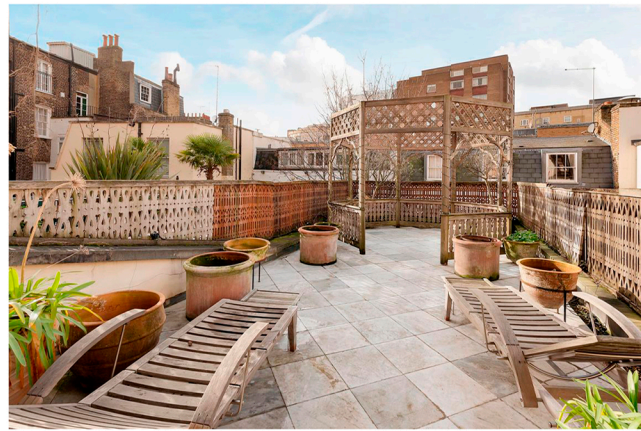
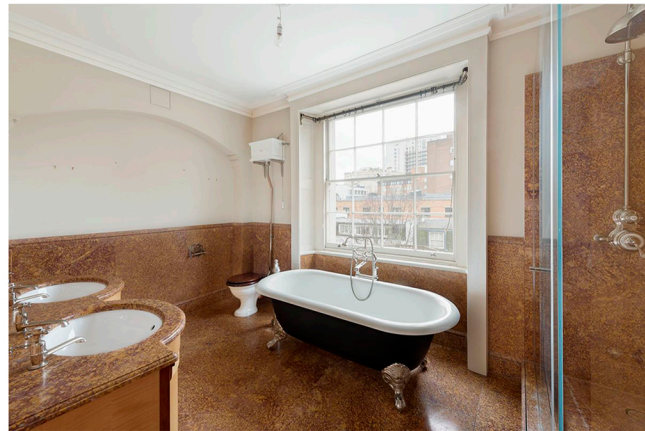
werinvestments.com

WER INVESTMENTS

Residential & Commercial Investment

WILTON CRESCENT

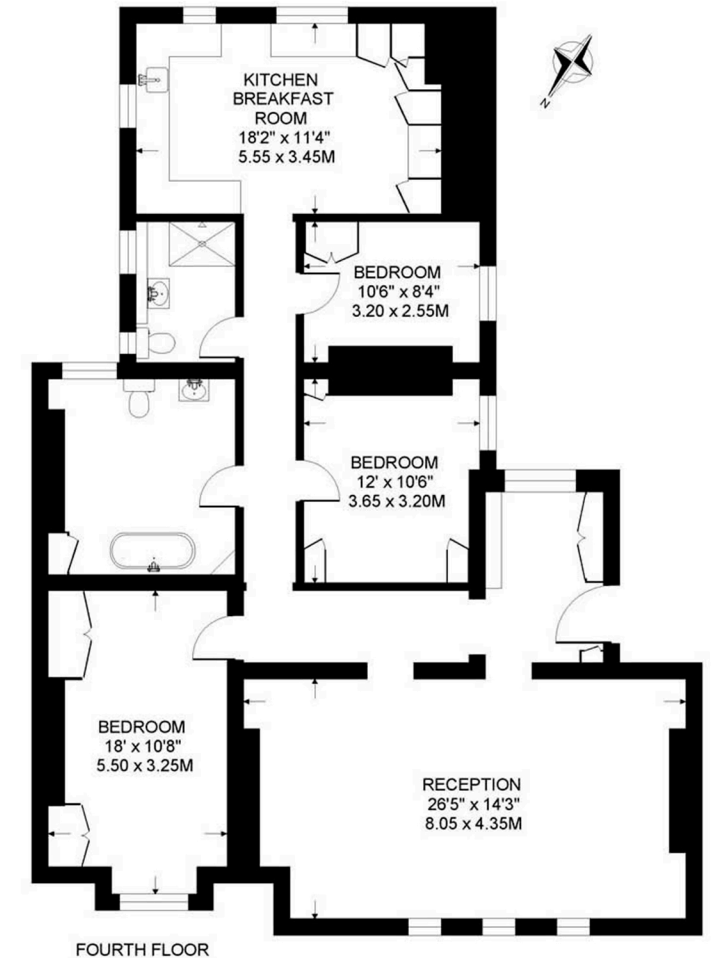
Situated within one of London's most elegant crescents is this beautifully restored grade II listed six story period house, overlooking the central gardens. The property is offered together with the benefit of a mews house incorporating two garages, a private enclosed garden, a roof garden and glass covered mezzanine terrace. Recent refurbishment to this property was under the direction of internationally acclaimed interior designer Robert Kime. Kime's exceptional knowledge, experience and eye for detail has created a unique and elegant interior and gardens.



Asking Price £19,000,000

OVERSTRAND MANSIONS
BATTERSEA, LONDON SW11

APPROXIMATE INTERNAL FLOOR AREA
1452 SQ.FT / 134.8 SQ.M.



The quality in design and materials is further illustrated in the en-suite bathrooms and cloakrooms, with high quality fittings used along with rare book matched marble slabs. Wilton Crescent is located in the heart of Belgravia, and lies east of Lowndes Square and to the north west of Belgrave Square. The house can be accessed either via Wilton Place or Belgrave Square and is adjacent to Grosvenor Crescent whilst further to the east lies Buckingham Palace.

It is well located for a range of amenities, including the 350 acres (160 hectares) of Hyde Park, one of 8 Royal Parks in the capital. The iconic department stores of Harvey Nichols and Harrods, a wide selection of five star hotels, London's finest restaurants, international music venues, luxury shopping, leading museums, schools and universities are all within close proximity, thus making Wilton Crescent an exceptional international address. Heathrow airport is approximately 14 miles away.

 siham@werinvestments.com
 02037007177
 werinvestments.com

WER INVESTMENTS
Residential & Commercial Investment